



Plainview - Old Bethpage Central School District

2014 Bond Referendum &
Capital Improvement Projects

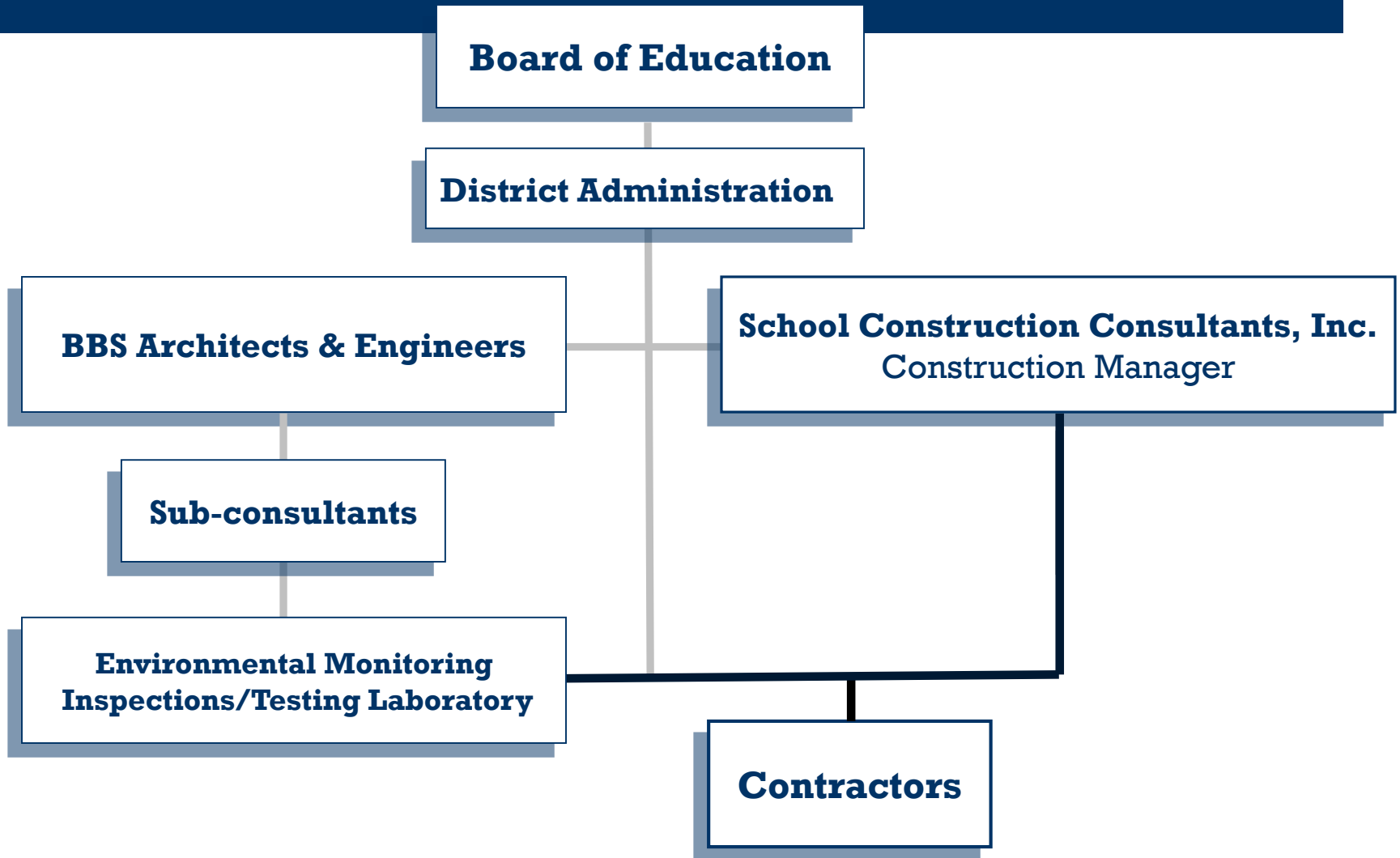
December 7, 2015



Prepared by:

Construction Management & Consulting Services

The Project Team



Plainview - Old Bethpage Central School District

Role of the Construction Manager

- **Preconstruction services - design timeline, budgets, document review**
- **Assist in bidding and procurement of contractors**
- **Administer and monitor the work of the Prime Contractors for general conformance with construction documents**
- **Maintaining project records**
- **Tracking project schedule and budget**
- **Close-out of contracts – punch list, as-builts, warranty documents**

Plainview - Old Bethpage Central School District

Summary of Completed Work

➤ 2014 Bond Referendum

Phase 1 (Summer - Fall 2015)

POB MS - Floor tile replacement
- Replace baseball field backstop

Stratford Rd. Elem. - Baseball field conversion
- Full roof recoating

Parkway Elem. - Floor tile replacement

Plainview - Old Bethpage Central School District

- JFK HS**
 - Floor tile replacement
 - Construct new tennis courts (6 total)
- Mattlin MS**
 - Floor tile replacement
 - Construct new tennis courts (6 total)
 - Full roof recoating
- Pasadena Elem.**
 - Floor tile replacement
 - Roof recoat – Library and Cafeteria
 - RPZ retaining wall repair
- Old Bethpage Elem.**
 - Floor tile replacement
 - Full roof recoating

Plainview - Old Bethpage Central School District

District-wide Flooring Projects



Plainview - Old Bethpage Central School District

Sitework Projects



JFK HS Tennis Court Replacement



Mattlin MS Tennis Court Replacement



**Stratford Road School
Baseball Field reconstruction**



**POB Middle School
Baseball Field reconstruction**

Plainview - Old Bethpage Central School District

District-wide Roofing Projects



Mattlin MS Roofing and Skylights

Plainview - Old Bethpage Central School District

Balance of Phase I Work

(Summer - Fall 2016)

Stratford Rd. Elem. - Floor tile replacement

Parkway Elem. - Roof recoat – Library and Cafeteria
- Window and door replacements *

Pasadena Elem. - Window and door replacements *

* SED approval has been received - Architect preparing Bid Package

Plainview - Old Bethpage Central School District

Look Ahead:

- Phase 2 Bond projects - scheduled to commence mid-2016

Parkway Elem. - Doors & Hardware *

- Masonry reconstruction
- ADA Accessibility Upgrades
- HVAC Repairs / Upgrades
- Gymnasium A/C
- Lighting / Ceiling Replacements
- Cafetorium Upgrades
- Electrical Upgrades

Pasadena Elem. - Doors & Hardware *

- Masonry reconstruction
- ADA accessibility Upgrades

* SED approval has been received

Plainview - Old Bethpage Central School District

Look Ahead:

➤ Phase 2 Bond projects - continued

- POB MS**
- Window Replacements *
 - Doors & Hardware
 - ADA Accessibility Upgrades
 - HVAC Repairs / Upgrades
 - Auditorium & Cafeteria A/C
 - Lighting / Ceiling Replacements
 - Auditorium Upgrades
 - Electrical Upgrades
 - Repair/regROUT pool & deck

- Stratford Rd.**
- Doors & Hardware
 - ADA Accessibility Upgrades
 - HVAC Repairs / Upgrades
 - Gym & K-Center A/C
 - Construct staff toilet
 - Lighting / Ceiling Replacements
 - Electrical Upgrades

* SED approval has been received and in Bid stage.

Plainview - Old Bethpage Central School District

Look Ahead:

➤ Phase 2 Bond projects - continued

JFK HS - Electrical Upgrades

Old Bethpage Elem. - Electrical Upgrades

Mattlin MS - Doors & Hardware
- A/C in LGI, Library, and
(3) Music Suites
- Electrical Upgrades

Jamaica Ave. - Window Replacements *
- Doors & Hardware
- ADA Accessibility Upgrades

District-wide Security upgrades

* SED approval has been received and in Bid stage.

Plainview - Old Bethpage Central School District

Look Ahead:

- Phase 3 Bond projects – Scheduled to commence mid-2017

POB MS - Masonry reconstruction
- Renovate (4) Science Rooms

Stratford Rd. - Window Replacements
- Auditorium Upgrades

Jamaica Ave. - Lighting / Ceiling
replacements

JFK HS - Doors & Hardware
- Masonry reconstruction
- ADA accessibility upgrades
- HVAC repairs / upgrades
- Cafeteria A/C
- Lighting / Ceiling replacements
- LGI Upgrades
- Inspect / replace main drain lines
- Windows and roof replacement
(under Capital Reserve)
- 50 kw Solar array

Plainview - Old Bethpage Central School District

Look Ahead:

- Phase 3 Bond projects – Scheduled to commence mid-2017

Mattlin MS - Masonry reconstruction
- ADA accessibility Upgrades
- HVAC Repairs / Upgrades
- Reconstruct (5) science rooms
- Reconstruct (3) Art rooms
- Lighting / Ceiling replacements
- LGI Upgrades

Pasadena Elem. - HVAC repairs/upgrades
- Gymnasium A/C
- Lighting / Ceiling replacements
- Cafetorium Upgrades
- Electrical Upgrades
- Replace ceramic floor tile in
(6) bathrooms

Plainview - Old Bethpage Central School District

Look Ahead:

- Phase 3 Bond projects – Scheduled to commence mid-2017

Old Bethpage Elem.

- Doors & Hardware
- Masonry reconstruction
- ADA accessibility upgrades
- HVAC repairs / upgrades
- Gymnasium A/C
- Lighting / Ceiling replacements
- Multi-purpose Room Upgrades

Fern Place

- Doors / Hardware
- Masonry Reconstruction

District-wide

- Fire Alarm Upgrades
- Technology / Electrical Upgrades
- localized cabinet replacements

Plainview - Old Bethpage Central School District

Look Ahead:

- Phase 4 Bond projects* – Scheduled to be completed by Fall 2018
 - New Elementary classrooms - TBD

Items identified as “B” List priorities*:

- Boiler replacements
- Parking lot improvements
- Generators
- Locker Room renovations
- Air conditioning projects
- Various Mechanical, Electrical, and Plumbing Upgrades
- New classroom space

*Based on available remaining Bond Referendum funds.

Plainview - Old Bethpage Central School District

Capital Reserve Projects

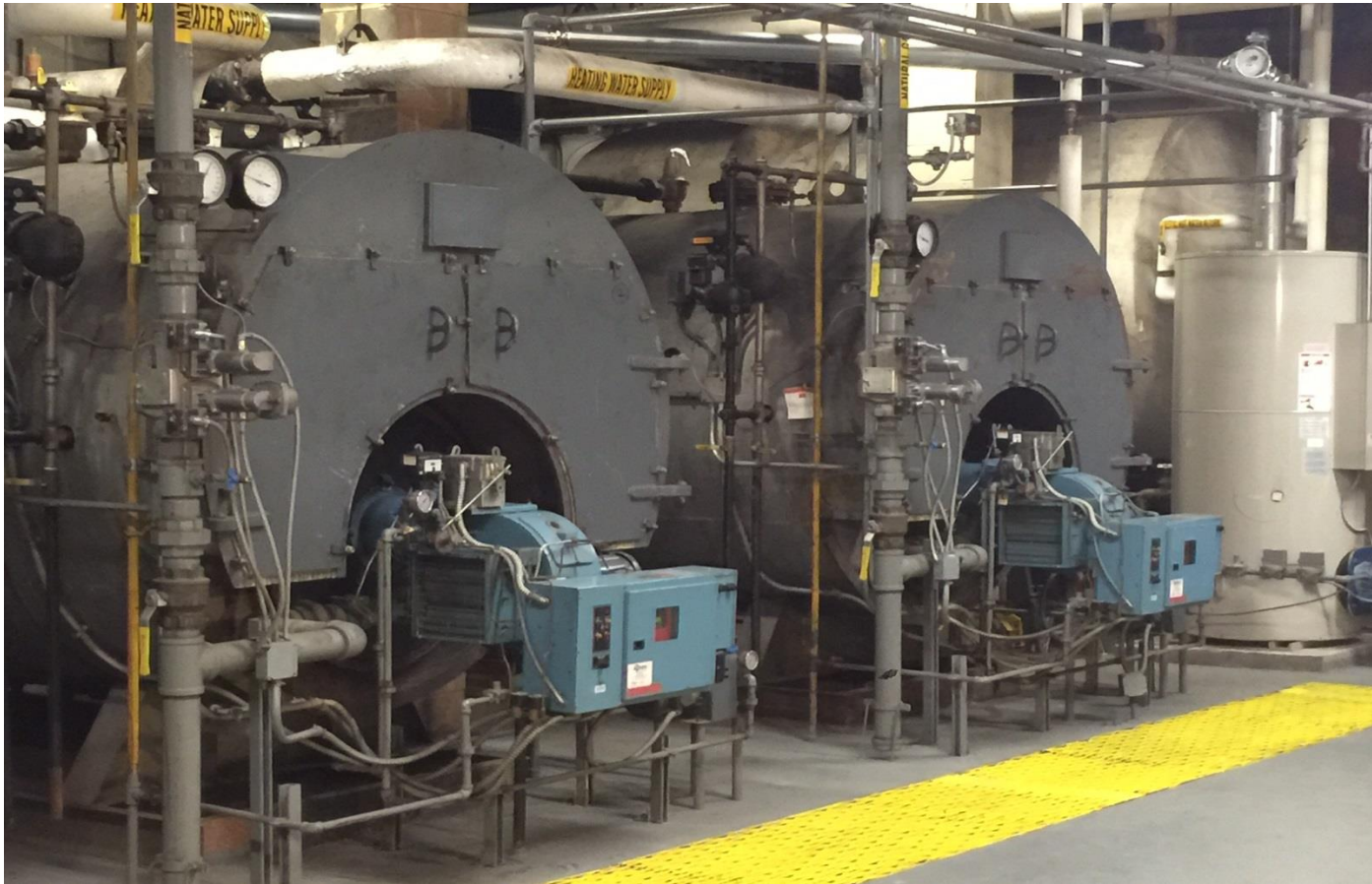
- Track reconstruction at POB MS (completed)
- Skylight replacements at Mattlin MS (completed)
- Old Bethpage Elem. Gym Bleachers (completed)
- Stratford Rd. Elem. Gym Bleachers (completed)
- POB MS Gym Bleachers (completed)

Upcoming Capital Projects

- Boiler replacements at Mattlin MS (Contracts have been awarded)
- JFK HS Roof replacement (incorporated into Bond phasing)
- JFK HS Window Replacements (incorporated into Bond phasing)
- District-wide door replacements (incorporated into Bond phasing)
- POB MS Parking Lot reconstruction (incorporated into Bond phasing)

Plainview - Old Bethpage Central School District

Capital Reserve Projects



The Mattlin Boiler replacement project has been awarded. Construction submittal process has begun.

Plainview - Old Bethpage Central School District



**Thank You for the Opportunity to be a Part of
the Plainview-Old Bethpage Project Team.**

